

QUICK START LIFE™

EARLY DELIVERY HOMES



BRANTHAVEN HOMES

LOCATED IN

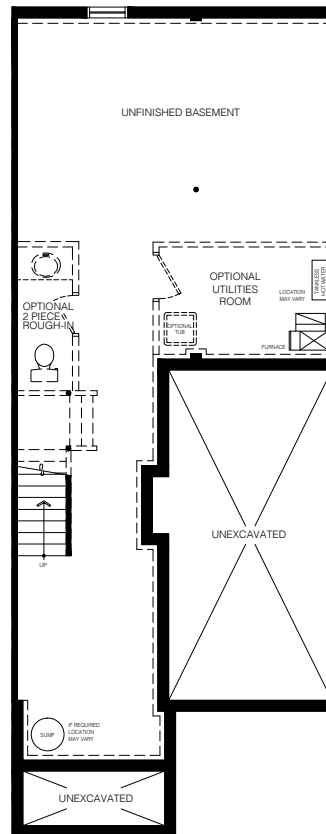
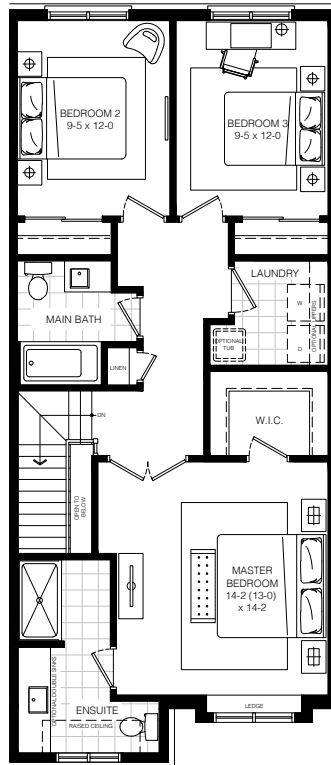
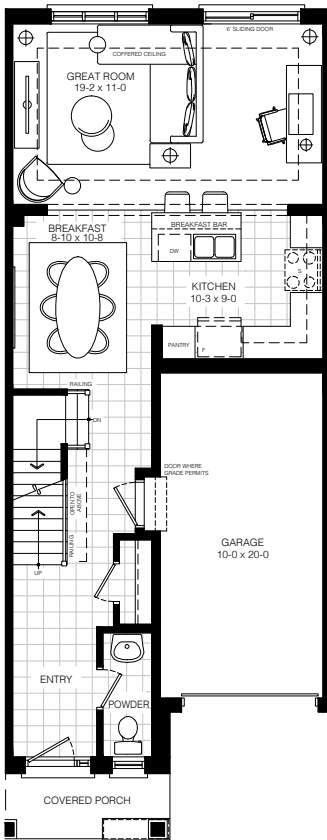
Oakville

Lot 240
Maple Grove
\$839,900

MAIN FLOOR
Elevation 'A'

SECOND FLOOR
Elevation 'A'

BASEMENT
Elevation 'A'



1,615 sf

20' 2-Storey
End Unit
3 Bedroom
Backs Onto Woodlot

Available:
September 25, 2019

Contact:
905-333-6162

- Finished Spec Home
- Feature-filled, family-friendly, completed home ready to move in and enjoy
- Branthaven Designer selected finishes including thousands in upgrades
- See sales rep for full list of included upgrades

Oakville URBAN LIVING

All renderings are artist's concept. Prices, sizes, materials and specifications are subject to change without notice. E.&O.E.